



MINISTRY OF TOURISM, CREATIVE INDUSTRY  
& PERFORMING ARTS SARAWAK

# SARAWAK TOURISM QUICK FACTS 2024/2025

BROOKE DOCKYARD  
INDUSTRIAL HERITAGE MUSEUM

**SARAWAK**  
More To Discover



# SARAWAK TOURISM QUICK FACTS 2024 / 2025

## **PUBLISHED BY**

**Ministry of Tourism, Creative Industry and Performing Arts Sarawak  
16th Floor (Right Wing), Bangunan Baitulmakmur II  
Medan Raya, Petra Jaya, 93050 Kuching  
SARAWAK**

## **ALL RIGHTS RESERVED**

No portion of this publication may be reproduced in whole or part, without the written permission of the publisher. While every effort has been made to ensure that the information contained herein is correct at the time of publication, Ministry of Tourism, Creative Industry and Performing Arts Sarawak shall not be held liable for any errors, omissions or inaccuracies which may occur.

# CONTENTS

# PAGES

Vision, Mission and Pillars	1
Sarawak Facts	2
Sarawak In Brief	3
Visitor Arrivals into Sarawak & Tourism Receipts	4
Visitor Arrivals to Sarawak by Months 2024	5
Mode of Entry	6
Entry Points Into Sarawak	6 - 7
Top 10 Countries Visitor Arrivals 2024	8
Visitor Arrivals by Regions 2024	9
Latest Direct Flights Into Sarawak	10
Weekly Flight Operation Frequency to Sarawak 2025	11
S-MM2H Data 2007 - 2024	12
S-MM2H Fixed Deposit (FD) Placement For 2023 vs 2024	13
Top 5 Countries S-MM2H	13
Top 10 Countries S-MM2H 2024	14
Numbers of Registered Hotels By Classification 2023 vs 2024	15
Sarawak Homestay Operators 2023 vs 2024	16
Homestay Clusters Map In Sarawak 2024	17 - 18
Licensed Regional Specific Tourist Guide (RSTG) and Tourist Guide (TG) 2023 vs 2024	19
Visitor Arrival to National Parks / Nature Reserve / Wildlife Centre	20
Foreign Visitor Arrivals to National Park / Nature Reserve / Wildlife Centre 2023 vs 2024	21
Domestic Visitor Arrivals to National Park / Nature Reserve / Wildlife Centre 2023 vs 2024	22
List of Gazetted Totally Protected Area (TPA) 2024	23
Visitor Arrivals to Sarawak Museum 2024	24
List Gazetted Forts in Sarawak 2024	25
Sarawak Craft Industry 2024	26
MySeni Grant by Sarawak Arts Council	27
Number of Completed Project 2024 and New Projects 2025	28
2025 Tourism Events Highlight	29 - 30
Business Events Highlight	31 - 32
Important Contacts & Visitor Information Centre	33



**MINISTRY OF TOURISM, CREATIVE INDUSTRY AND  
PERFORMING ARTS SARAWAK**

## **MISSION**

TO LEAD THE ADVANCEMENT OF  
SARAWAK'S TOURISM, ARTS CULTURE AND HERITAGE.

## **VISION**

SARAWAK TO BE PREMIER TOURISM DESTINATION  
AND A SHOWCASE OF UNIQUE ARTS, CULTURE AND HERITAGE.

**1**

To formulate policy and strategic plan for development of tourism, arts, culture and heritage.

**2**

To facilitate and encourage regional cooperation for the development and empowerment of tourism, arts, culture and heritage.

**3**

To integrate and efficiently manage, encourage participation from all stakeholders in the development of tourism, arts, culture.

**4**

To cultivate knowledgeable, skills, creative and innovative human capital in tourism, arts, culture and heritage.

**EFFECTIVE  
GOVERNANCE**

**TOURISM  
OPERATIONAL  
EXCELLENCE**

**STAKEHOLDER  
COLLABORATION**

**HUMAN CAPITAL  
DEVELOPMENT**

**STRATEGIC THRUSTS & CORE VALUES RESULTS ORIENTED,  
INTEGRITY, KIND AND CARING, TEAMWORK, SENSE OF URGENCY & OWNERSHIP, PROFESSIONALISM**

# SARAWAK FACTS

Sarawak, also known as the 'Land of the Hornbills' has all the elements required to become Malaysia's next desirable destination, from natural beauty, history, heritage, festivals, to modern city-living and luxury. It is located on the island of Borneo bordering with the eastern state of Sabah, the Sultanate of Brunei and the Indonesian province of Kalimantan. It is home to 34 ethnic groups, each with its own distinct language, culture and lifestyle. Indeed, it has become a potpourri of experiences appreciated by travellers from all over the world.

Sarawak's new thematic destination campaign - Gateway to Borneo - strategically positions Sarawak as the premier entry point to the vibrant island of Borneo which also includes Brunei, Kalimantan and Sabah. This campaign aspires to showcase Sarawak as not just a destination, but a gateway into a realm of unparalleled experiences, discoveries, and inspirations that the greater Bornean region offers. As the Gateway to Borneo, every step in Sarawak promises enriching encounters and new experiences.

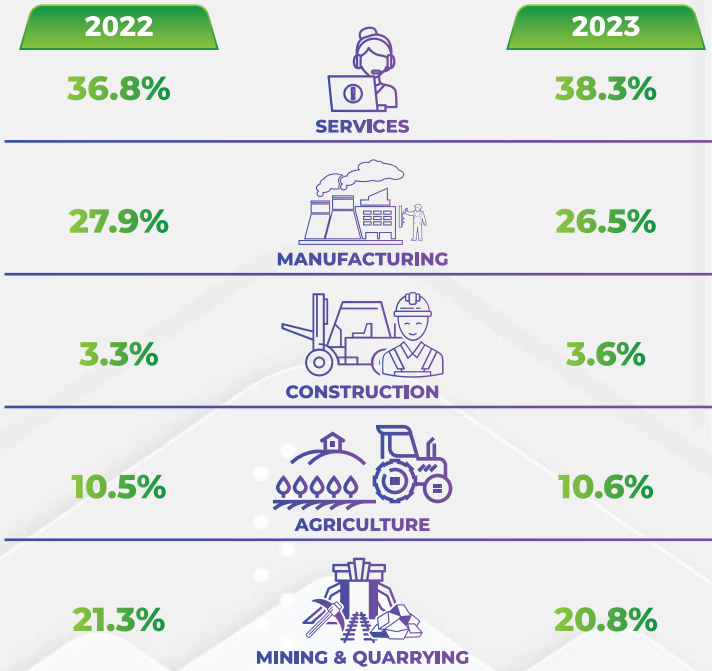


More To Discover

# SARAWAK IN BRIEF

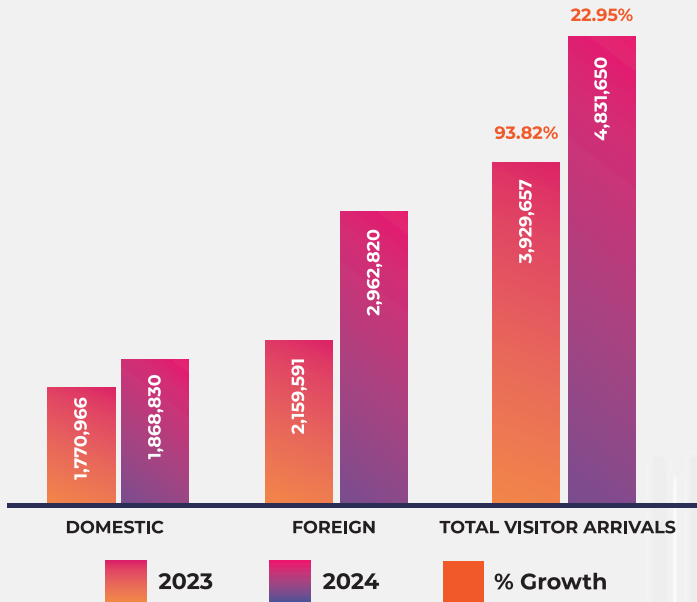


## SARAWAK ECONOMY BY SECTORS 2022 vs 2023



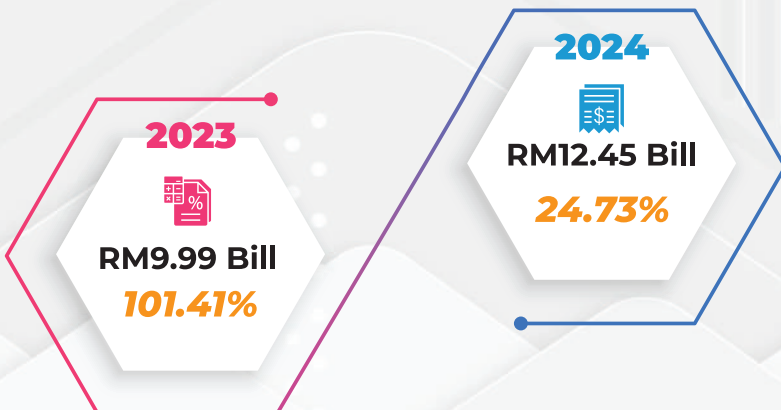


# VISITOR ARRIVALS INTO SARAWAK



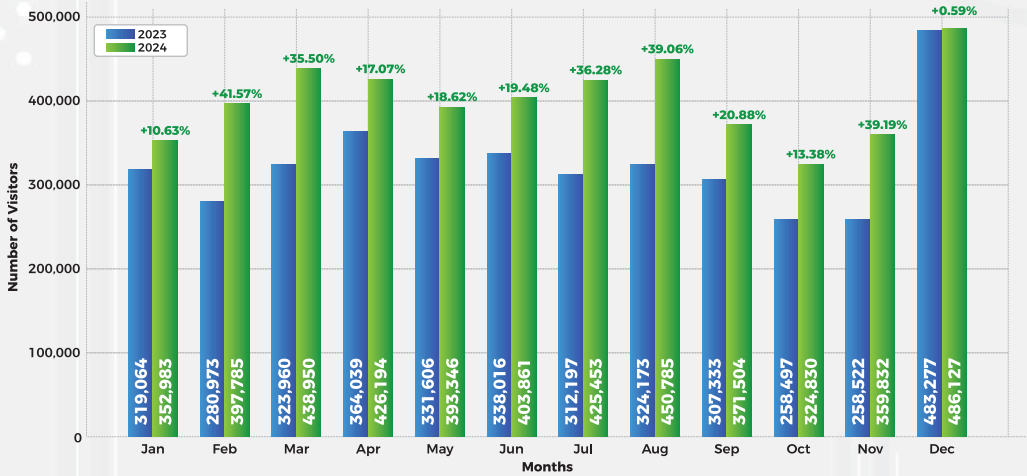
Source :Jabatan Imigresen Sarawak 2024

# SARAWAK TOURISM RECEIPTS



Source : Regional Tourism Satellite Account, 2018

# VISITORS ARRIVAL TO SARAWAK BY MONTHS



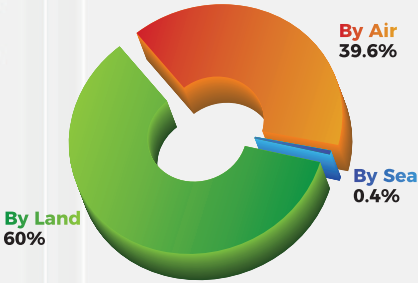
MONTHS	2023	2024	% CHANGE 2023 / 2024
JANUARY	319,064	352,983	10.63%
FEBRUARY	280,973	397,785	41.57%
MARCH	323,960	438,950	35.50%
APRIL	364,039	426,194	17.07%
MAY	331,606	393,346	18.62%
JUNE	338,016	403,861	19.48%
JULY	312,197	425,453	36.28%
AUGUST	324,173	450,785	39.06%
SEPTEMBER	307,333	371,504	20.88%
OCTOBER	258,497	324,830	13.38%
NOVEMBER	258,522	359,832	39.19
DECEMBER	483,277	486,127	0.59%
<b>TOTAL</b>	<b>3,929,657</b>	<b>4,831,650</b>	<b>22.95%</b>

"The number of visitor arrivals to Sarawak increased by **+22.95%** from 2023 to 2024, with the highest surge recorded in **February (+41.57%)**. Although **December** had the highest total number of visitors, its growth rate was lower compared to other months."



# ENTRY POINTS INTO SARAWAK

Mode of Entry into Sarawak (2023)  
Total : 3,929,660

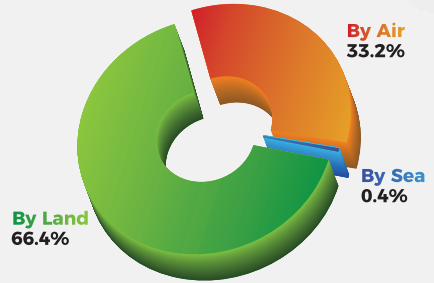


**By Air**  
ARRIVALS 1,554,459  
GROWTH% +44.17%

**By Sea**  
ARRIVALS 16,929  
GROWTH% -0.18%

**By Land**  
ARRIVALS 2,358,272  
GROWTH% +152.95%

Mode of Entry into Sarawak (2024)  
Total : 4,831,650



**By Air**  
ARRIVALS 1,606,477  
GROWTH% +3.35%

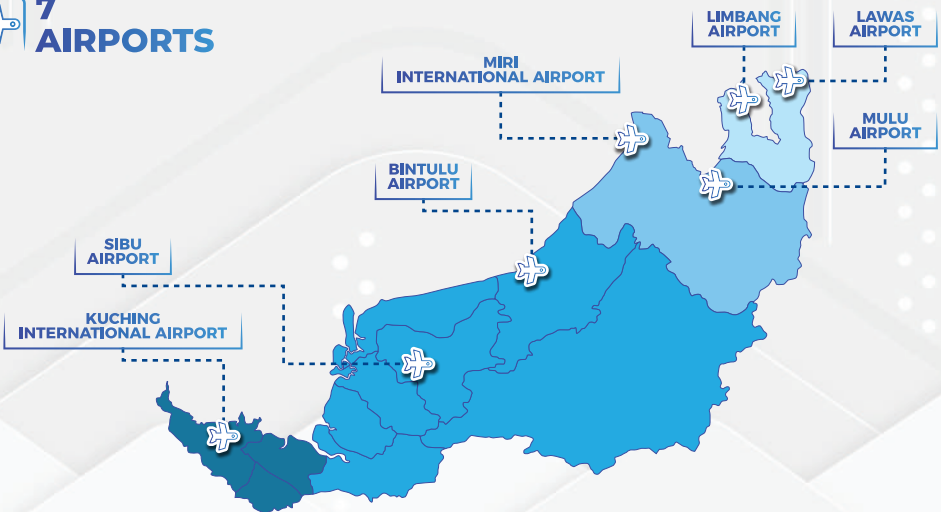
**By Sea**  
ARRIVALS 17,336  
GROWTH% +2.40%

**By Land**  
ARRIVALS 3,207,837  
GROWTH% +36.02%

## ENTRY POINTS BY AIR INTO SARAWAK



**7 AIRPORTS**



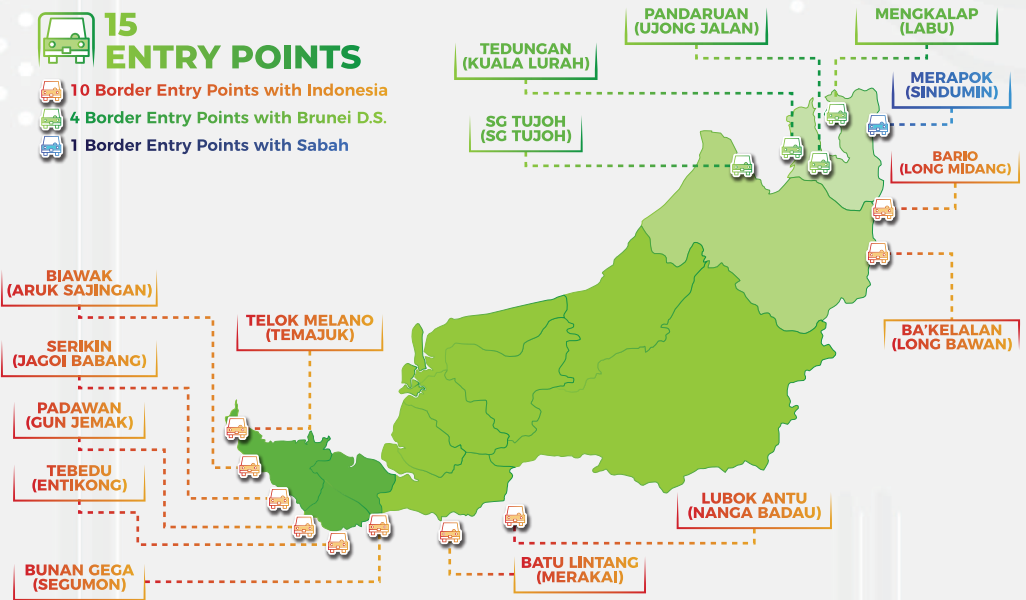
Source : Immigration Department of Malaysia, Sarawak, 2024

# ENTRY POINTS BY LAND INTO SARAWAK



## 15 ENTRY POINTS

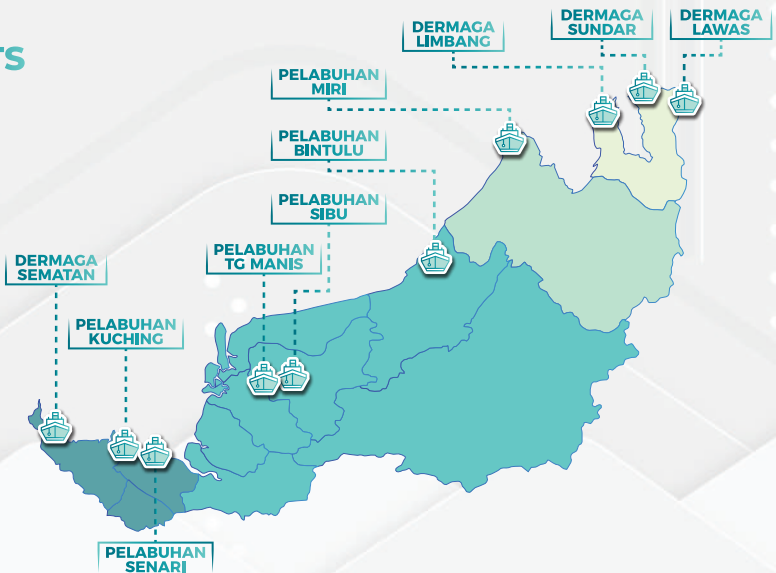
- 10 Border Entry Points with Indonesia
- 4 Border Entry Points with Brunei D.S.
- 1 Border Entry Points with Sabah



# ENTRY POINTS BY SEA INTO SARAWAK



## 10 PORTS

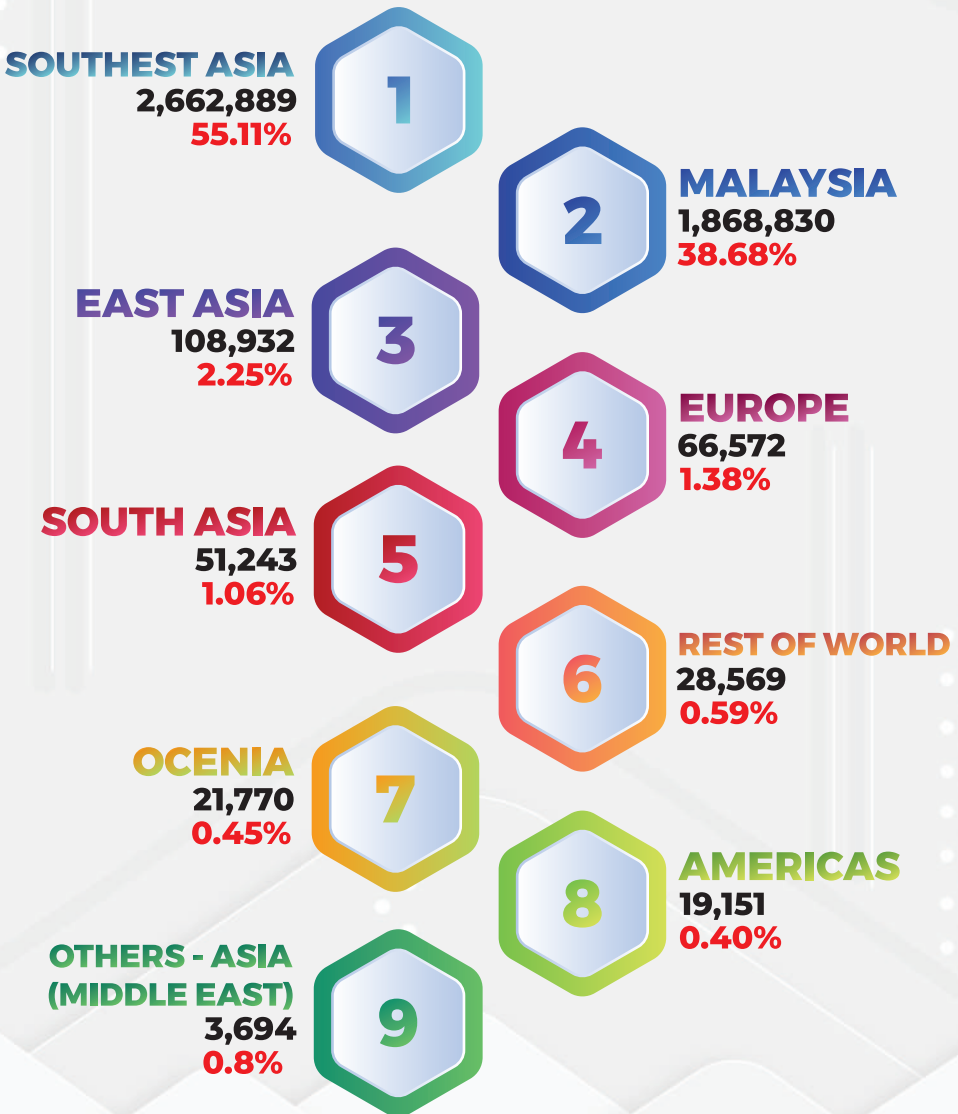


Source : Immigration Department of Malaysia, Sarawak, 2024

# TOP 10 COUNTRIES VISITOR ARRIVALS 2024



# VISITOR ARRIVALS BY REGIONS 2024



Source : Immigration Department Of Malaysia, Sarawak

# LATEST DIRECT FLIGHT INTO SARAWAK

## LATEST DIRECT FLIGHTS INTO SARAWAK

	TOTAL INTERNATIONAL FLIGHTS	TOTAL DOMESTIC FLIGHTS
Number of Frequencies	41	373
<b>TOTAL INTERNATIONAL &amp; DOMESTIC FLIGHTS</b>	<b>414</b>	

## INTERNATIONAL FLIGHTS TO SARAWAK

### LATEST INTERNATIONAL FLIGHTS TO KUCHING

NO	DEPART FROM	AIRLINES	WEEKLY FLIGHTS REQUENCY	CONFIRMED SCHEDULE
1	SINGAPORE	AIRASIA	12	12
2	JAKARTA	AIRASIA	3	3
3	SINGAPORE	MAS	7	7
4	SINGAPORE	SCOOT AIRLINES	7	7
5	BRUNEI	RBA	2	2
<b>TOTAL</b>			<b>31</b>	<b>31</b>

### LATEST INTERNATIONAL FLIGHTS TO MIRI

NO	DEPART FROM	AIRLINES	WEEKLY FLIGHTS REQUENCY	CONFIRMED SCHEDULE
1	SINGAPORE	AIRASIA	4	4
2	SINGAPORE	SCOOT AIRLINES	3	3
<b>TOTAL</b>			<b>7</b>	<b>7</b>

### LATEST INTERNATIONAL FLIGHTS TO SIBU

NO	DEPART FROM	AIRLINES	WEEKLY FLIGHTS REQUENCY	CONFIRMED SCHEDULE
1	SINGAPORE	AIRASIA	4	3
<b>TOTAL</b>			<b>4</b>	<b>3</b>



# WEEKLY FLIGHT OPERATION FREQUENCY TO SARAWAK 2025

## DOMESTIC FLIGHTS TO SARAWAK

### LATEST DOMESTIC FLIGHTS TO KUCHING

NO	DEPART FROM	AIRLINES	WEEKLY FLIGHTS REQUENCY	CONFIRMED SCHEDULE
1	KUALA LUMPUR	MAS	57	54
2	PENANG	FIREFLY	14	14
3	KOTA KINABALU	FIREFLY	14	10
4	KUALA LUMPUR	AIRASIA	95	66
5	KOTA KINABALU	AIRASIA	28	22
6	JOHOR BAHRU	AIRASIA	28	19
7	KOTA BHARU	AIRASIA	3	3
8	KUALA LUMPUR	BATIK AIR	14	14
<b>TOTAL</b>			<b>253</b>	<b>202</b>

### LATEST DOMESTIC FLIGHTS TO MIRI

NO	DEPART FROM	AIRLINES	WEEKLY FLIGHTS REQUENCY	CONFIRMED SCHEDULE
1	KUALA LUMPUR	MAS	28	21
2	KUALA LUMPUR	AIRASIA	35	21
3	KOTA KINABALU	AIRASIA	17	14
4	JOHOR BAHRU	AIRASIA	3	2
5	KOTA KINABALU	FIREFLY	4	2
6	LABUAN	MASWINGS	35	21
<b>TOTAL</b>			<b>122</b>	<b>81</b>

### LATEST DOMESTIC FLIGHTS TO BINTULU

NO	DEPART FROM	AIRLINES	WEEKLY FLIGHTS REQUENCY	CONFIRMED SCHEDULE
1	KUALA LUMPUR	MAS	21	13
2	KUALA LUMPUR	AIRASIA	21	14
3	KOTA KINABALU	AIRASIA	14	5
<b>TOTAL</b>			<b>56</b>	<b>32</b>

### LATEST DOMESTIC FLIGHTS TO SIBU

NO	DEPART FROM	AIRLINES	WEEKLY FLIGHTS REQUENCY	CONFIRMED SCHEDULE
1	KUALA LUMPUR	MAS	21	12
2	KUALA LUMPUR	AIRASIA	39	23
3	KOTA KINABALU	AIRASIA	14	7
4	JOHOR BAHRU	AIRASIA	10	4
<b>TOTAL</b>			<b>84</b>	<b>46</b>

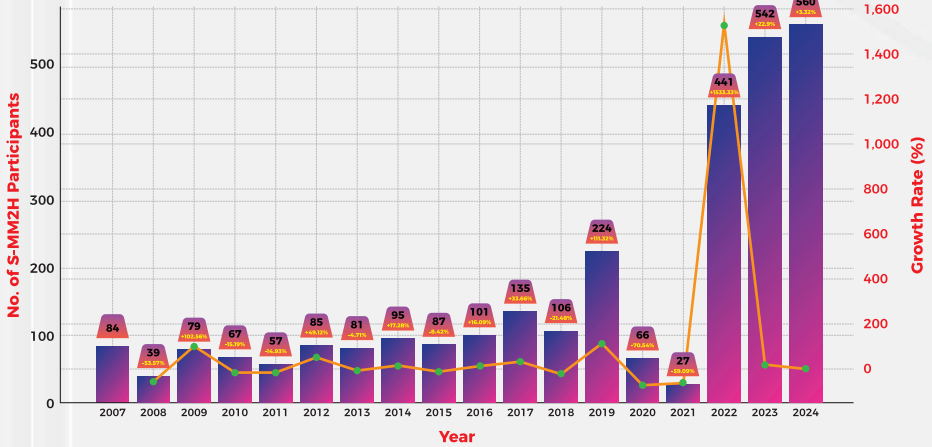
### LATEST DOMESTIC FLIGHTS TO LIMBANG / LAWAS

NO	DEPART FROM	AIRLINES	WEEKLY FLIGHTS REQUENCY
1	KOTA KINABALU TO LIMBANG	MASWINGS	3
2	KOTA KINABALU TO LAWAS	MASWINGS	2
<b>TOTAL</b>			<b>5</b>

### LATEST DOMESTIC FLIGHTS TO MULU

NO	DEPART FROM	AIRLINES	WEEKLY FLIGHTS REQUENCY
1	KOTA KINABALU	MASWINGS	7
<b>TOTAL</b>			<b>7</b>

# S-MM2H DATA 2007 - 2024



Number of SMM2H Participants  
 % Growth Rate  
**Total:** 2,876 participants  
1641.65%

Year	No. of S-MM2H Participants	% Growth Rate
2007	84	-
2008	39	-53.57
2009	79	+102.56
2010	67	-15.19
2011	57	-14.93
2012	85	+49.12
2013	81	-4.71
2014	95	+17.28
2015	87	-8.42
2016	101	+16.09
2017	135	+33.66
2018	106	-21.48
2019	224	+111.32
2020	66	-70.54
2021	27	-59.09
2022	441	+1,533.33
2023	542	+22.90
2024	560	+3.32
<b>TOTAL</b>	<b>2,876</b>	<b>1,641.65%</b>

**2007 - 2019**  
 (13 years)

Total participants is **1,240**  
 Total average growth from  
 2007 - 2019 is **16.29%**

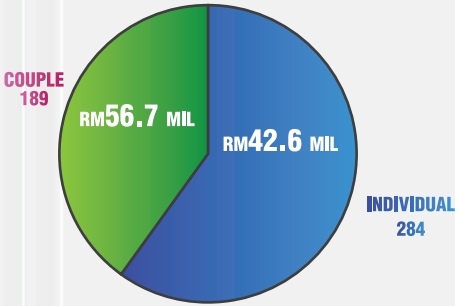
**2020 - 2024**  
 (5 years)

Total participants is **1,636**  
 Total average growth from  
 2020 - 2024 is **285.98%**



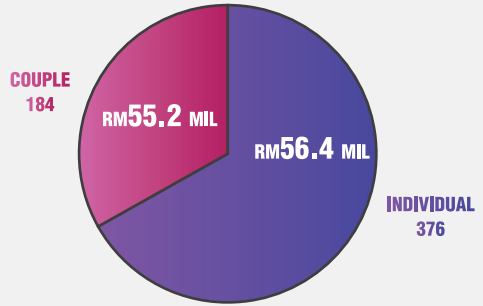
# S-MM2H FIXED DEPOSIT (FD) PLACEMENT FOR 2023 vs 2024

S-MM2H FIXED DEPOSIT (FD) PLACEMENT FOR 2023



Grand Total of FD is RM99.3 Million (473 Participants)

S-MM2H FIXED DEPOSIT (FD) PLACEMENT FOR 2024



Grand Total of FD is RM111.6 Million (560 Participants)

Overall Total of S-MM2H Participants : 2,876



TOTAL ECONOMIC IMPACT  
RM 4.99 Billion



TOTAL PROPERTY PURCHASED BY S-MM2H PARTICIPANTS (2007 - 2003)  
RM 2.51 Billion

## TOP 5 COUNTRIES S-MM2H



126



57



47



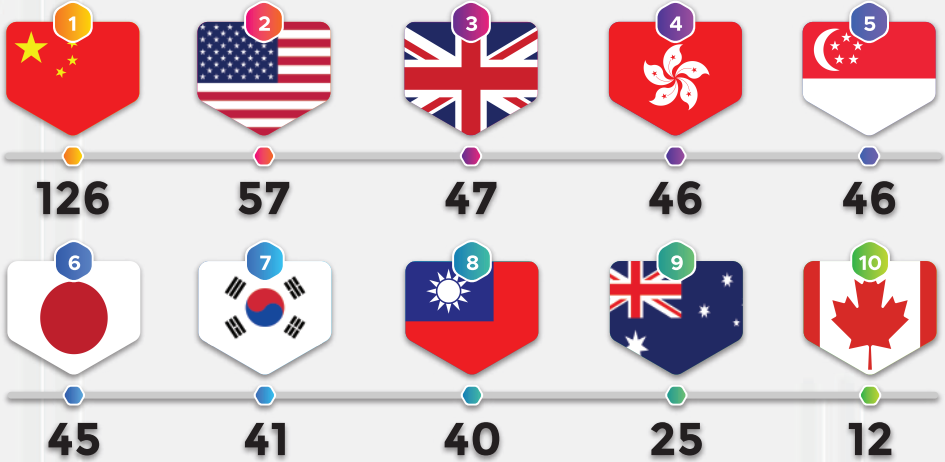
46



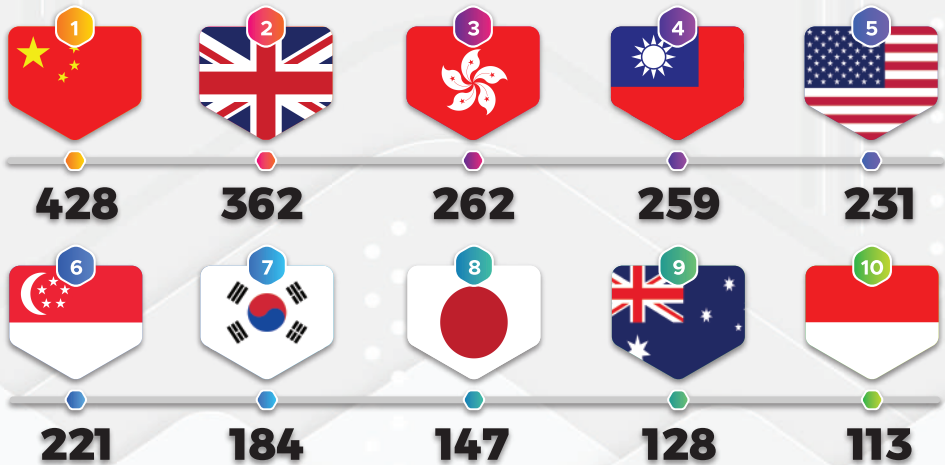
46

# TOP 10 COUNTRIES S-MM2H 2024

## TOP 10 COUNTRIES S-MM2H PARTICIPANTS FOR THE YEAR 2024

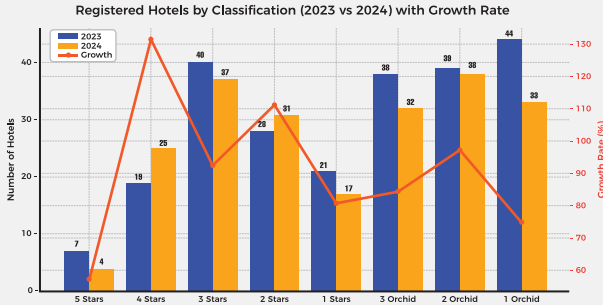


## TOP 10 COUNTRIES S-MM2H PARTICIPANTS FOR THE YEAR 2007 - 2024

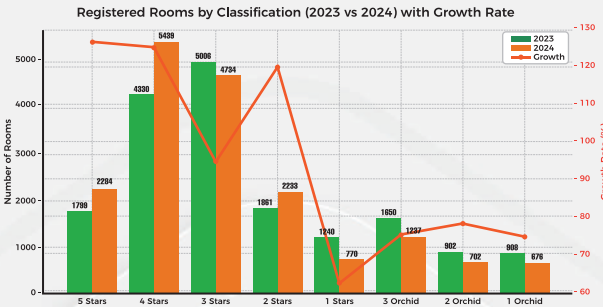


Source : Ministry of Tourism, Creative Industry and Performing Arts Sarawak

# NUMBERS OF REGISTERED HOTELS BY CLASSIFICATION 2023 vs 2024



## HOTELS



## ROOMS



Source : Ministry of Tourism, Arts and Culture Malaysia (MOTAC), 2024

# SARAWAK HOMESTAY OPERATORS 2023 vs 2024

## SARAWAK HOMESTAY OPERATORS 2023 vs 2024

DIVISION	NO OF HOMESTAY		NO OF OPERATORS		NO OF ROOM	
	2023	2024	2023	2024	2023	2024
KUCHING	17	17	197	233	395	436
SAMARAHAN	3	4	39	45	66	76
SERIAN	5	5	67	72	108	112
SRI AMAN	1	1	10	10	12	12
BETONG	2	2	24	19	41	30
SARIKEI	2	2	31	34	57	50
SIBU	3	3	42	43	65	66
MUKAH	2	2	17	17	31	31
KAPIT	1	4	25	50	70	145
MIRI	10	13	180	211	487	559
LIMBANG / LAWAS	4	4	67	76	166	170
<b>TOTAL</b>	<b>50</b>	<b>57</b>	<b>699</b>	<b>810</b>	<b>1,498</b>	<b>1,687</b>
<b>GROWTH (%)</b>	<b>14%</b>		<b>15.88%</b>		<b>12.62%</b>	

## HOMESTAY VISITORS AND RECEIPTS 2023 vs 2024

YEAR	DOMESTIC	FOREIGNER	TOTAL VISITORS
2023	4,550	979	5,529
2024	52,927	3,046	55,973
<b>GROWTH (%)</b>	<b>+1063.23 %</b>	<b>+211.13 %</b>	<b>+912.35 %</b>

## HOMESTAY RECEIPTS

2023	2024	GROWTH (%)
RM 3,221,949.02	RM 6,697,972.04	+107.89 %

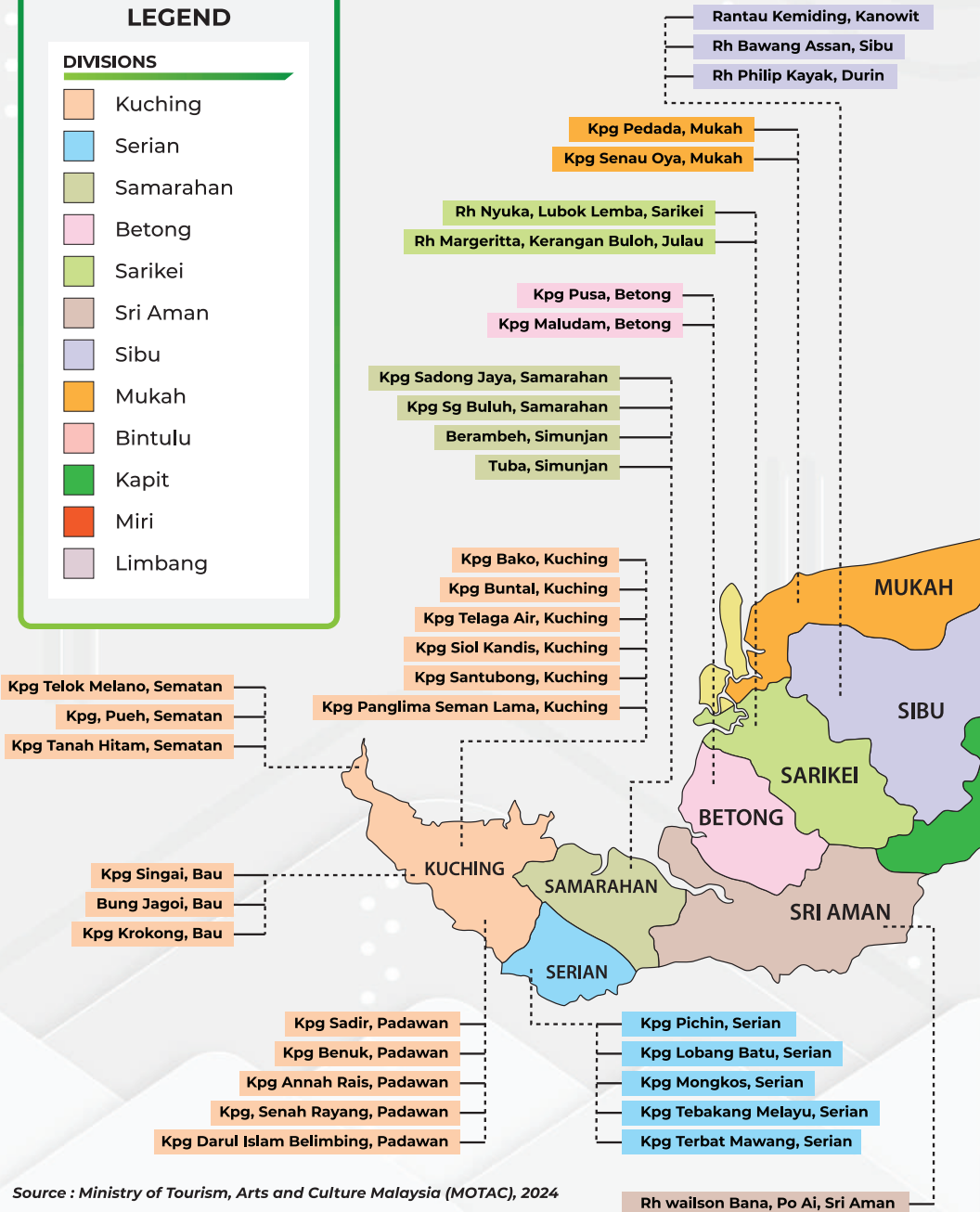
Source : Ministry of Tourism, Arts and Culture Malaysia (MOTAC), 2024

# HOMESTAY CLUSTERS MAP IN SARAWAK 2024

## LEGEND

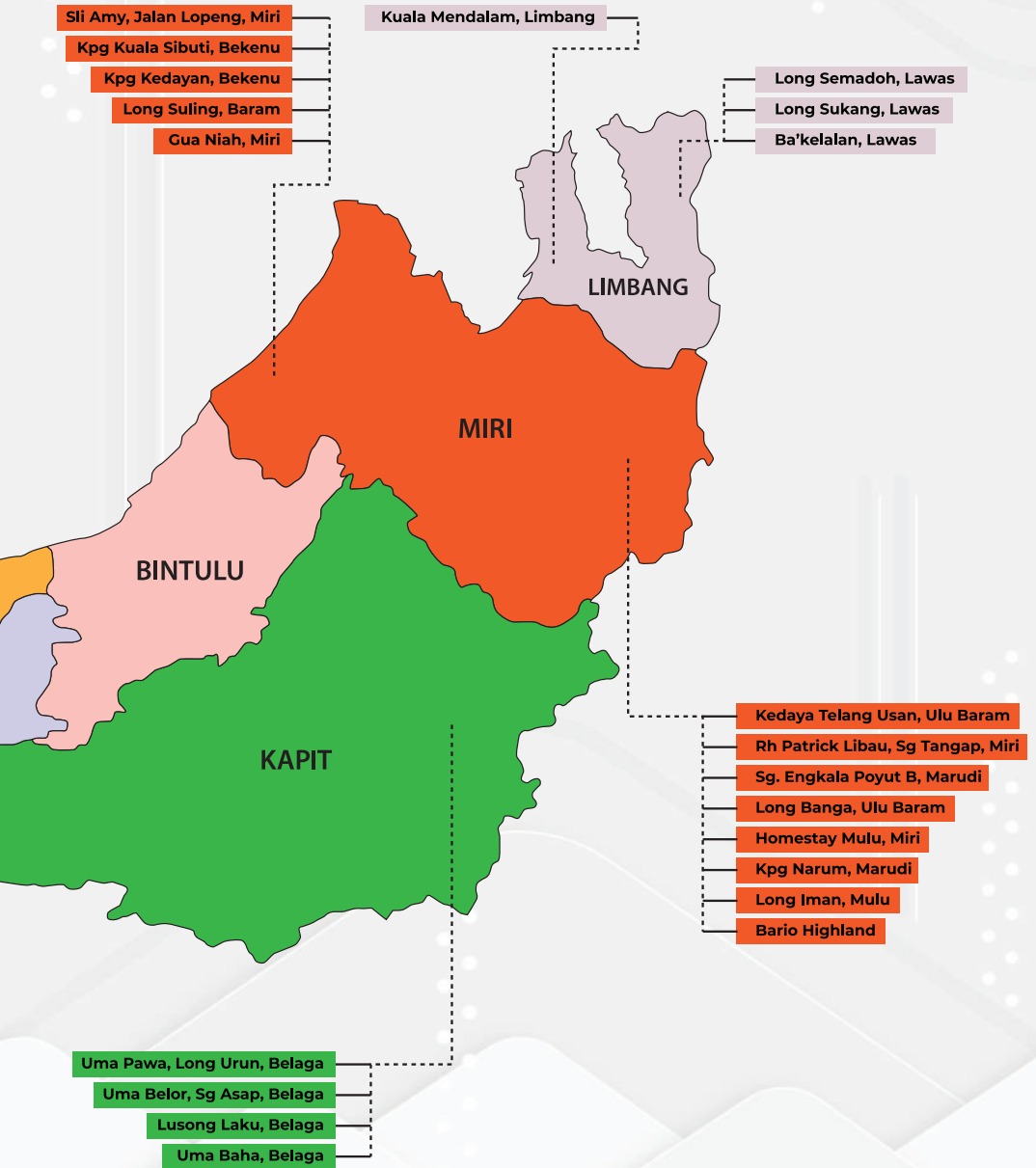
### DIVISIONS

- Kuching
- Serian
- Samarahan
- Betong
- Sarikei
- Sri Aman
- Sibu
- Mukah
- Bintulu
- Kapit
- Miri
- Limbang

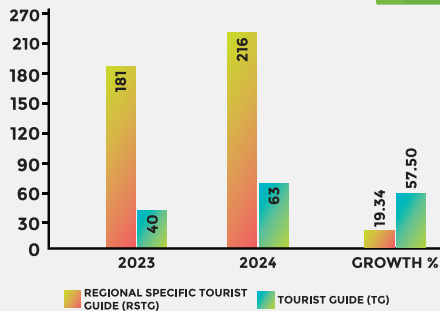


Source : Ministry of Tourism, Arts and Culture Malaysia (MOTAC), 2024

# HOMESTAY CLUSTERS MAP IN SARAWAK 2024



# LICENSED REGIONAL SPECIFIC TOURIST GUIDE (RSTG) AND TOURIST GUIDE (TG) 2023 vs 2024



## TOTAL NUMBER OF PARK GUIDES AT NATIONAL PARK, WILDLIFE CENTRE AND NATURE RESERVE 2024

### NATIONAL PARK, NATURE RESERVE & WILDLIFE CENTRE

### TOTAL NUMBER OF PARK GUIDE

SOUTHERN ZONE SECTOR 1	
Kuching Wetlands	3
Bako NP	186
Tanjung Datu NP	32
Talang Satang NP	13
Santubong NP	3
SOUTHERN ZONE SECTOR 2	
Matang WC	72
Semenggoh WC	140
Wind and Fairy Cave	51
Samajaya NR	32
Kubah NP	86
Gunung Gading NP	76
CENTRAL ZONE	
Bukit Lima NR	3
Tun Ahmad Saidi NR	3
Maludam NP	3
Similajau NP	3
NORTHERN ZONE	
Lambir Hills NP	61
Niah NP	54
Piasau NP	29
Loagan Bunut NP	29
Gunung Mulu NP	117
ACTIVE	196
NOT ACTIVE	174
TOTAL	370

Source : Sarawak Forestry Corporation, 2024

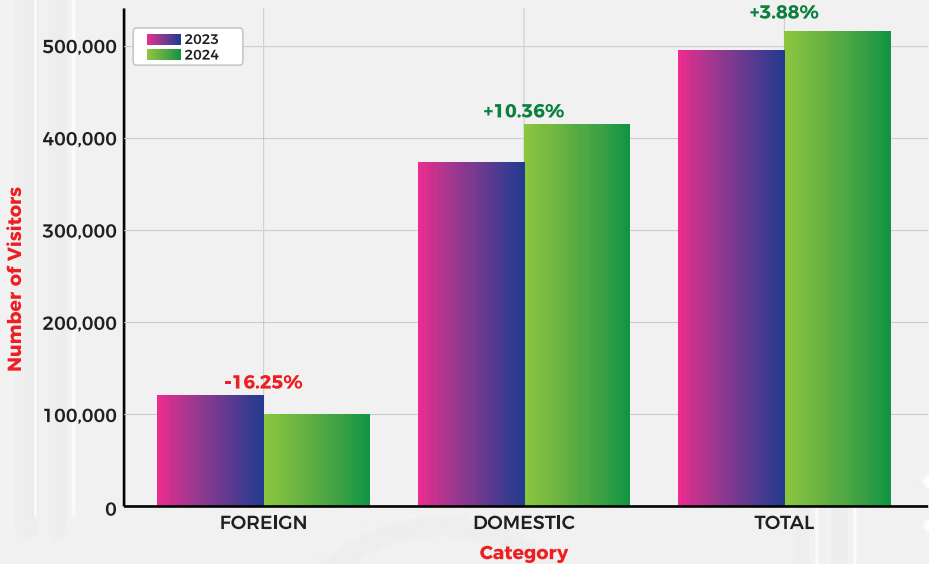


# VISITOR ARRIVAL TO NATIONAL PARKS / NATURE RESERVE / WILDLIFE CENTRE



## NATIONAL PARKS & NATURE RESERVES IN SARAWAK

Visitor Arrivals to National Parks in Sarawak (2023 vs 2024)



YEARS	FOREIGN VISITOR	DOMESTIC VISITOR	TOTAL VISITOR
2023	120,615	375,004	495,619
2024	101,015	413,848	514,863
<b>GROWTH (%)</b>	<b>-16.25%</b>	<b>+10.36%</b>	<b>+3.88%</b>

Source : Sarawak Forestry Corporation, 2024

# FOREIGN VISITOR ARRIVALS TO NATIONAL PARK / NATURE RESERVE / WILDLIFE CENTRE 2023 vs 2024



## NATIONAL PARKS & NATURE RESERVES IN SARAWAK



## FOREIGN VISITOR

PARKS	2023	2024	GROWTH (%)
<b>KUCHING REGION</b>			
BAKO NATIONAL PARK	31,696	35,404	+11.70%
KUBAH NATIONAL PARK	2,798	4,329	+54.72%
GUNUNG GADING NATIONAL PARK	2,467	2,169	-12.08%
BATANG AI NATIONAL PARK	10	17	+70.00%
MATANG WILDLIFE CENTRE	1,443	2,108	+46.08%
SEMENGGOH WILDLIFE CENTRE	41,343	47,411	+14.68%
WIND CAVE NATURE RESERVE	4,926	6,214	+26.15%
FAIRY CAVE NATURE RESERVE	10,069	12,393	+23.08%
SAMA JAYA NATURE RESERVE	2,469	2,341	-5.18%
TANJUNG DATU NATIONAL PARK	642	624	-2.80%
TALANG SATANG NATIONAL PARK	963	778	-19.21%
SANTUBONG NATIONAL PARK	1,173	1,023	-12.79%
KUCHING WETLAND NATIONAL PARK	0	2	0%
<b>BINTULU REGION</b>			
SIMILAJAU NATIONAL PARK	110	70	-36.36%
BUKIT KANA NATIONAL PARK	0	0	0%
<b>MIRI REGION</b>			
NIAH NATIONAL PARK	4,592	4,752	+3.48%
LAMBIR HILLS NATIONAL PARK	2,044	1,268	-37.96%
LOAGAN BUNUT NATIONAL PARK	76	41	-46.05%
GUNUNG MULU NATIONAL PARK	13,181	14,260	+8.19%
PIASAU NATURE RESERVE	342	971	+183.92%
MIRI-SIBUTI CORAL REEFS NATIONAL PARK	241	225	-6.64%
BUKIT SEMBILING / BUKIT HITAM NATURE RESERVE	2	0	-100.00%
<b>PULONG TAU NATIONAL PARK</b>			
	0	0	0%
<b>SIBU REGION</b>			
MALUDAM NATIONAL PARK	22	17	-22.73%
BUKIT LIMA NATURE RESERVE	6	2	-66.67%
<b>TOTAL</b>	<b>120,615</b>	<b>136,419</b>	<b>+13.10%</b>

Source : Sarawak Forestry Corporation, 2024

# DOMESTIC VISITOR ARRIVALS TO NATIONAL PARK / NATURE RESERVE / WILDLIFE CENTRE 2023 vs 2024



## NATIONAL PARKS & NATURE RESERVES IN SARAWAK



## DOMESTIC VISITOR

PARKS	2023	2024	GROWTH (%)
<b>KUCHING REGION</b>			
BAKO NATIONAL PARK	16,489	11,829	-28.26%
KUBAH NATIONAL PARK	11,813	16,532	39.95%
GUNUNG GADING NATIONAL PARK	12,065	7,973	-33.92%
BATANG AI NATIONAL PARK	35	11	-68.57%
MATANG WILDLIFE CENTRE	10,973	9,520	-13.24%
SEMENGGOH WILDLIFE CENTRE	65,282	64,994	-0.44%
WIND CAVE NATURE RESERVE	27,425	18,226	-33.54%
FAIRY CAVE NATURE RESERVE	41,464	34,308	-17.26%
SAMA JAYA NATURE RESERVE	90,387	118,066	30.62%
TANJUNG DATU NATIONAL PARK	795	1,200	50.94%
TALANG SATANG NATIONAL PARK	222	305	37.39%
SANTUBONG NATIONAL PARK	5,285	5,740	8.61%
KUCHING WETLAND NATIONAL PARK	0	0	0%
<b>BINTULU REGION</b>			
SIMILAJAU NATIONAL PARK	1,956	964	-50.72%
BUKIT KANA NATIONAL PARK	0	0	0%
<b>MIRI REGION</b>			
NIAH NATIONAL PARK	25,107	29,770	18.57%
LAMBIR HILLS NATIONAL PARK	5,826	8,557	46.88%
LOAGAN BUNUT NATIONAL PARK	714	675	-5.46%
GUNUNG MULU NATIONAL PARK	8,053	7,778	-3.41%
PIASAU NATURE RESERVE	11,652	9,839	-15.56%
MIRI-SIBUTI CORAL REEFS NATIONAL PARK	465	807	73.55%
BUKIT SEMBILING / BUKIT HITAM NATURE RESERVE	10,639	9,828	-7.62%
<b>PULONG TAU NATIONAL PARK</b>			
	0	7	0%
<b>SIBU REGION</b>			
MALUDAM NATIONAL PARK	211	231	9.48%
BUKIT LIMA NATURE RESERVE	28,146	21,284	-24.38%
<b>TOTAL</b>	<b>375,004</b>	<b>378,444</b>	<b>+0.92%</b>

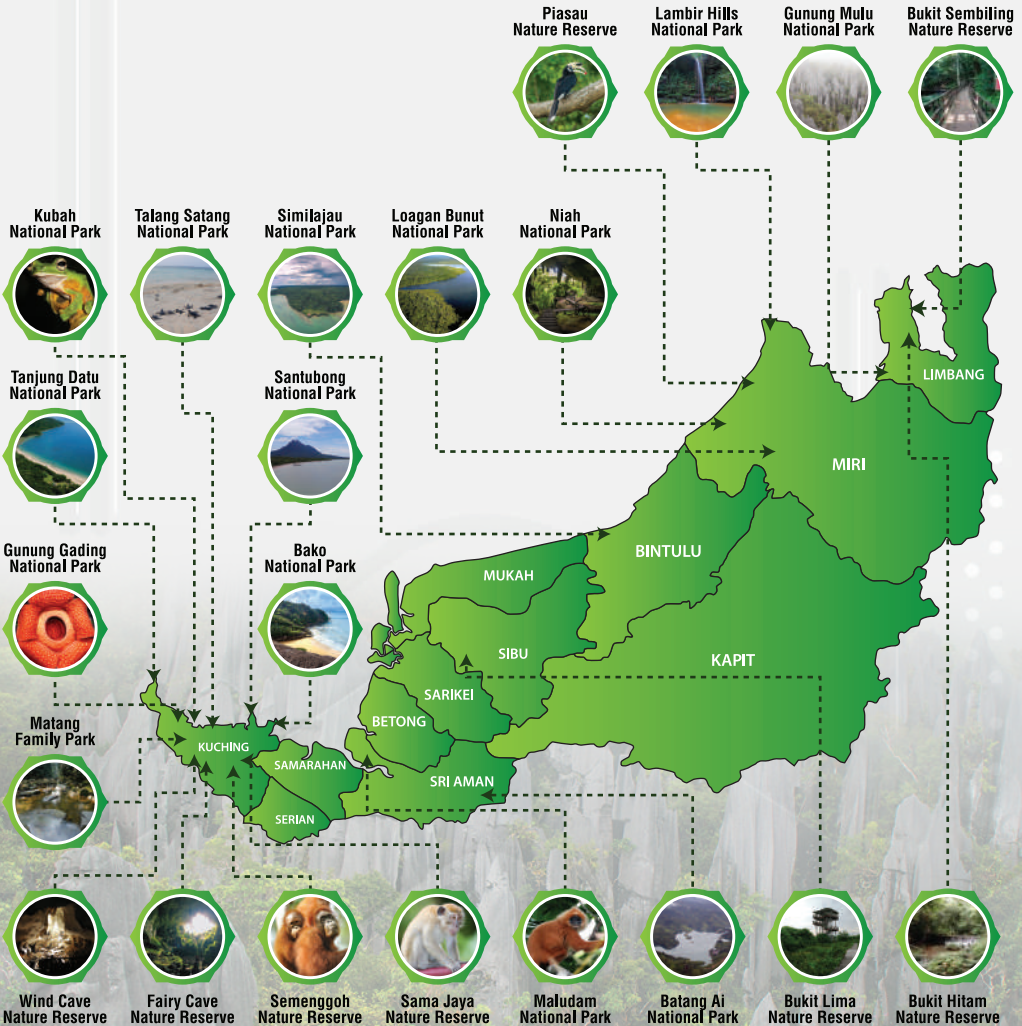
Source : Sarawak Forestry Corporation, 2024

# LIST OF GAZETTED TOTALLY PROTECTED AREA (TPA) 2024



## NATIONAL PARKS & NATURE RESERVES IN SARAWAK

TOTALLY PROTECTED AREA	NUMBER OF PARK
NATIONAL PARK	47
NATURE RESERVE	15
WILD LIFE SANCTUARY	5
<b>TOTAL</b>	<b>67</b>



For more information, please visit Sarawak Forestry Corporation (SFC) website at [www.sarawakforestry.com](http://www.sarawakforestry.com)



# VISITORS ARRIVALS TO SARAWAK MUSEUM 2024



JABATAN MUZIUM SARAWAK

## VISITOR ARRIVALS TO SARAWAK MUSEUM 2024 (MONTHLY)

No.	Museum	JAN	FEB	MAC	APRIL	MAY	JUNE	JULY	AUG	SEPT	OCT	NOV	DEC	TOTAL
1	Borneo Cultures Museum	19,487	31,986	18,868	15,974	27,939	24,636	46,314	21,310	31,591	19,050	23,371	36,655	317,181
2	Sarawak Museum	62	145	115	66	93	91	103	138	71	74	69	79	1,106
3	Chinese History Museum	3,023	3,722	3,476	3,280	5,116	4,441	5,220	4,234	5,486	3,128	4,303	4,393	49,822
4	Sarawak Islamic Heritage Museum	921	1,184	994	872	1,276	1,250	3,761	1,163	2,206	933	1,050	2,003	17,613
5	Mausoleum Of Sultan Tengah	48	223	24	16	33	4	49	53	56	47	27	663	1,243
6	Sri Aman Heritage Museum	510	1,604	883	727	839	1,136	1,152	679	1,488	926	1,809	1,320	13,073
7	Rumah Sri Aman	450	856	537	569	657	636	678	362	697	405	430	543	6,820
8	Limbang Regional Museum (Old Fort)	0	0	0	0	0	0	0	0	0	0	0	0	0
9	Limbang Museum	216	348	133	111	222	199	240	224	231	329	168	197	2,618
10	Niah Archaeology Museum	982	2,092	1,657	1,287	1,828	2,003	2,022	1,825	1,817	905	1,417	1,486	19,321
11	Fort Margherita	919	1,332	1,371	1,278	1,534	1,799	1,994	1,848	1,954	1,660	1,409	1,767	18,865
12	Petroleum Museum	2,063	4,823	2,822	2,143	2,638	3,773	2,714	2,573	4,726	2,325	2,338	3,944	36,882
13	Natural History Museum	1,228	1,877	1,381	1,355	2,295	1,740	2,907	1,764	1,974	1,343	1,294	1,508	20,666
14	Fort Lily (Betong)	0	52	419	75	74	160	91	72	126	52	58	108	1,287
15	Muzium Wilayah Baram (Kubu Hose)	601	763	788	851	461	548	660	527	754	55	836	1,398	8,242
16	Kubu Brooke	10	129	121	95	121	87	264	73	317	1,481	69	79	2,846
17	Kubu Emma	0	51	175	132	101	133	80	97	216	1,080	65	65	2,195
	<b>TOTAL</b>	<b>30,520</b>	<b>51,187</b>	<b>33,764</b>	<b>28,831</b>	<b>45,227</b>	<b>42,636</b>	<b>68,249</b>	<b>36,942</b>	<b>53,710</b>	<b>33,793</b>	<b>38,713</b>	<b>56,208</b>	<b>519,780</b>

Source : Jabatan Muzium Sarawak, 2024

# LIST OF GAZETTED FORTS IN SARAWAK 2024

**01** Fort Margherita, Kuching  
1879

**02** Fort Alice, Sri Aman  
1864

**03** Fort Arundell, Lubok Antu  
1912

**04** Fort Lily, Betong  
1858

**05** Fort Charles, Kabong  
1895

**06** Fort Brooke, Julau  
1935

**07** Fort Emma, Kanowit  
1851

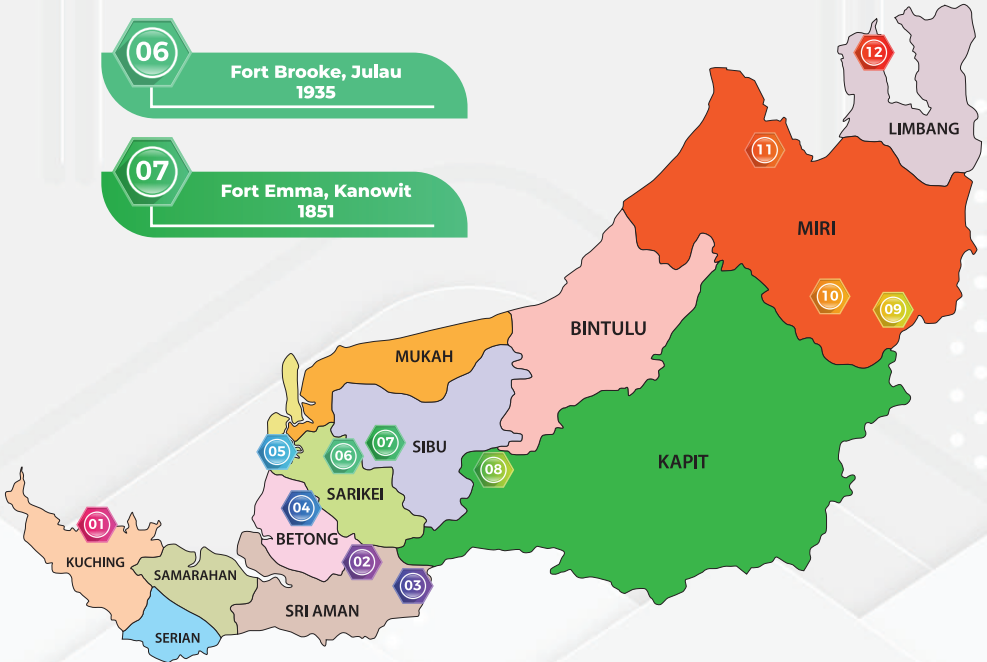
**08** Fort Sylvia, Kapit  
1880

**09** Fort Lio Mato, Baram  
1911

**10** Fort Long Akah, Baram  
1929

**11** Fort Hose, Marudi  
1899

**12** Old Fort, Limbang  
1897



Source : Jabatan Muzium Sarawak, 2024

# SARAWAK CRAFT INDUSTRY 2024

## SALES

RM 27.7 MILLION



## REGISTERED CRAFT ENTREPRENEURS

1,247 PEOPLE



## AVERAGE SALES MONTHLY

RM 1,851.10



## AVERAGE SALES ANNUALLY

RM 22,213.31

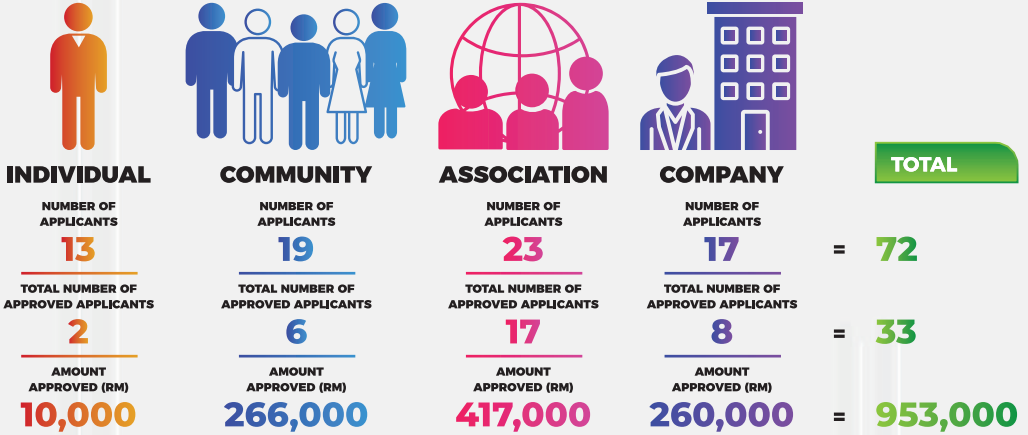


Source : Malaysia Handicrafts, Sarawak Branch 2024



# MYSENI GRANT BY SARAWAK ARTS COUNCIL

## CATEGORY



DIVISION	NUMBER OF APPLICANTS
KUCHING	23
KOTA SAMARAHAN	2
MUKAH	2
BETONG	1
SERIAN	1
BINTULU	1
SIBU	2
SRI AMAN	1
<b>TOTAL</b>	<b>33</b>

Source : Sarawak Arts Council, 2024

# NUMBER OF COMPLETED PROJECT 2024 AND NEW PROJECTS 2025

## NEW PROJECTS 2025

	PROJECT TITLE	EXPECTED COMPLETION DATE
1	SANTUBONG ARCHEOLOGICAL PARK AND WALLACE CENTRE	QUARTER 1 2025
2	MENAIK TARAF KEMUDAHAN INFRASTRUKTUR DAN BANGUNAN ETNIK (PERSADA ALAM) DI KAMPUNG BUDAYA SARAWAK, KUCHING	QUARTER 1 2025
3	BAIK PULIH DEWAN SERBAGUNA HOMESTAY KAMPUNG KUALA SIBUTI, BEKENU	QUARTER 1 2025
4	NAIK TARAF DEWAN SERBAGUNA HOMESTAY LONG SUKANG	QUARTER 1 2025
5	KERJA-KERJA PEMULIHAN, PEMULIHARAAN, UBAH SUAI DAN NAIK TARAF (PPUN) DI SIBU HERITAGE CENTRE	QUARTER 1 2025
6	MEMBAIKPULIH KEMUDAHAN PUSAT PELANCONGAN AIR TERJUN MELASAK, LAWAS	QUARTER 2 2025
7	NAIK TARAF KEMUDAHAN SEDIA ADA TASUK REKREASI UMA BELOR DAN PUSAT INFORMASI PELANCONG	QUARTER 2 2025
8	NAIK TARAF BALAI RAYA & BILIK PERSALINAN HOMESTAY KAMPUNG KROKONG, BAU	QUARTER 2 2025
9	TRANSFORMATION OF BROOKE DOCKYARD INTO INDUSTRIAL HERITAGE MUSEUM	QUARTER 3 2025
10	ESTABLISHMENT OF LUNDU TOURIST SUPPORT CENTRE FOR LUNDU AND SEMATAN	QUARTER 4 2025

## COMPLETED PROJECTS 2024

	PROJECT TITLE	COMPLETION DATE
1	CADANGAN MENAIKTARAF DAN MEMBAIKPULIH KAMPUNG BUDAYA SARAWAK	JANUARY 2024
2	MENAIKTARAF STRUKTUR GAZEBO MENARA TINJAU DI PANTAI KALA DANA, MUKAH	MARCH 2024
3	DECORATIVE LIGHTING AND CCTV (I LOVE KUCHING SIGNAGE)	APRIL 2024
4	PENAMBAHBAIKAN KEMUDAHAN PELANCONGAN DI PANTAI TUSAN, SIBUTI	JUNE 2024
5	PEMBANGUNAN KEMUDAHAN ECOTOURISM DI TAMAN NEGARA SANTUBONG	OCTOBER 2024
6	CONSTRUCTION OF JETTY AND OTHER FACILITIES AT SANTUBONG FOR KUCHING WETLAND NATIONAL PARK (RAMSAR SITE) TOURIST EMBARKATION (PHASE 1)	NOVEMBER 2024

# 2025 TOURISM EVENTS HIGHLIGHT

EVENT TITLE	DATE	DIVISION	VENUE	ORGANIZER
MBKS Ramadan Bazaar	2 - 31 Mac 2025	Kuching	Stutong Community Market Parking Area	Kuching South City Council (MBKS)
Miri Marathon 2025	13 April 2025	Miri	Jalan Merpati Miri	Miri Marathon Association
Silabur Ultra Trial (SUTRA25)	12 - 13 April 2025	Serian	Dewan Serbaguna Lobang Batu, Serian	Alpha Sport Event
Pesta Sebauh 2025	18 - 27 April 2025	Bintulu	Pekan Sebauh	Pejabat Daerah Sebauh
Kaul Mukah	19 - 27 April 2025	Mukah	Tapak Kaul Mukah	Persatuan Melanau Mukah
Bung Bratak Day	1 Mei 2025	Kuching	Stutong Community Market Parking Area	Kuching South City Council (MBKS)
XTERRA World Off-Road Triathlon Race in 2025 Sarawak	2 - 5 Mei 2025	Kuching	Sematan, Lundu	Persatuan Penggemar Sukan Lasak Draco Kuching (Kuching Draco Adventure Association)
Pesta Badudun dan Lumba Kerbau 2025	23 - 25 Mei 2025	Limbang	Kampung Lubok Piasau Limbang	Persatuan Melayu Limbang
Samarahan Bike Challenge	25 Mei 2025	Samarahan	The Summer Shopping Mall	Pejabat Daerah Samarahan
Irau Aco Lun Bawang (Lun Bawang Festival)	2 - 4 Jun 2025	Lawas	Stadium Tertutup Lawas / Lawas Indoor Stadium	Persatuan Lun Bawang Sarawak
Pesta Balulang dan Lumba Kerbau	13 - 15 Jun 2025	Limbang	Tapak Pesta Batu Danau	Persatuan Bisaya Sarawak
Rainforest Youth Summit 2025	18 - 20 Jun 2025	Kuching	Hikmah Exchange Event Centre	Sarawak Tourism Board
Rainforest World Music Festival 2025	20 - 22 Jun 2025	Kuching	Sarawak Culture Village	Sarawak Tourism Board
Borneo Cultural Festival	3 - 12 Julai 2025	Sibu	Dataran Tun Tuanku Bujang	Sibu Municipal Council
Safari Rakit Baleh Kapit (SRBK) Edisi Ke-28 Tahun 2025	11 - 13 Julai 2025	Kapit	Rh Nyandang, Nanga Majau, Balleh, Kapit	Kapit Resident Office
Pesta Nukenen Bario	25 - 27 Julai 2025	Miri	Bario	Rurum Kelabit Sarawak
Karnival Selangau 2025	25 - 27 Julai 2025	Sibu	Pekan Selangau	Sibu Rural District Council
Pesta Benak Sri Aman 2025	25 - 27 Julai 2025	Sri Aman	Batang Lupar Waterfront, Bandar Simanggang	Jawatankuasa Induk Pesta Benak, Pejabat Resident Bahagian Sri Aman
Kuching Festival	25 Julai - 17 Ogos 2025	Kuching	Kuching South City Council and Its Vicinity	Kuching South City Council (MBKS)
Pesta Makan Tahun Kedayan Limbang 2025	1 - 3 Ogos 2025	Limbang	Kampung Gukmaya, Limbang	Serian District Council
3rd Bintulu Marathon	3 Ogos 2025	Bintulu	Lasar Kenyalang (Bintulu Old Airport)	Bintulu Development Authority (BDA)
Borneo International Garden Expo Sarawak (BIGEXS) 2025	7 - 10 Ogos 2025	Kuching	Borneo Convention Centre Kuching (BCCCK)	Borneo Convention Centre Kuching (Ivory Success Sdn Bhd)
Kuching Heritage Lights and Floral Festival	8 - 16 Ogos 2025	Kuching	Kuching Waterfront	Dewan Bandayara Kuching Utara (DBKU)
Kuching Street Parade	9 Ogos 2025	Kuching	Kuching City Centre	Dewan Bandayara Kuching Utara (DBKU)
Siol International Mountain Bike Challenge (SIMBC 2025)	22 - 24 Ogos 2025	Kuching	Siol MTD Track, Kuching	Dewan Bandayara Kuching Utara (DBKU)
Miri International Bike Week	29 - 31 Ogos 2025	Miri	Permy Mall, Permyjaya Miri	Kelab Sukan Bermotor Promin Jaya Miri
Pesta Tatau 2025	29 Ogos - 14 September 2025	Bintulu	Taman Komuniti Sungai Jatan	Pejabat Daerah Pantu
Bung Sadung Climbathon Challenge	31 Ogos 2025	Serian	Kampung Bunga, Serian	Serian District Council

# 2025 TOURISM EVENTS HIGHLIGHT

EVENT TITLE	DATE	DIVISION	VENUE	ORGANIZER
Pesta Simunjan	September 2025	Samarahan	Pekan Simunjan	Pejabat Daerah Simunjan
Baram Regatta 2025, Marudi	September 2025	Miri	Dataran Marudi & Marudi Waterfront	Jawatankuasa Induk Baram Regatta
Lemeting Raft Challenge 2025	13 - 14 September 2025	Miri	Kampung Long Loyang, Tinjar	Pejabat Daerah Beluru
Sibujaya Water Fiesta 2025	13 - 28 September 2025	Sibu	Sibujaya	Sibu Rural District Council
18th Borneo International Kite Festival (BIKF)	September 2025	Bintulu	Lasar Kenyalang (Bintulu Old Airport)	Bintulu Development Authority (BDA)
KUCHING MARATHON 2025 (KM2025)	21 September 2025	Kuching	Padang Merdeka, Kuching	Persatuan Marathon Bahagian Kuching
Serian Rafting Challenge Festival	26 - 27 September 2025	Serian	Kpg. Tema Mawang, Tebedu & Pekan Tebakang, Serian	Serian District Council
Pesta Pantu 2025	26 - 28 September 2025	Sri Aman	Dataran Dewan Sri Pantu, Pantu	Pejabat Daerah Pantu
Regatta Telaga Air 2025	3 - 5 Oktober 2025	Kuching	Kampung Telaga Air	Padawan Municipal Council
Siniawan Country Music Festival	Oktober 2025	Kuching	Siniawan Old Town	JKKK Siniawan & District Bau Office
Padawan Raft Safari 2025	19 Oktober 2025 (Sunday)	Kuching	Kampung Annah Rais, Kampung Temurang, Kampung Danu, Kampung Semedang & Kampung Git	Padawan Municipal Council
11th Edition Sarawak International Dragon Boat Regatta 2025	24 - 26 Oktober 2025	Kuching	Kuching Waterfront	Ministry of Tourism, Creative Industry and Performing Art Sarawak & Malaysian Dragon Boat Federation
Serian Eco Run	26 Oktober 2025	Serian	Kpg Daha Kisau, Tebedu, Serian	Serian District Council
Regatta Lingga 2025	31 Oktober - 2 November 2025	Sri Aman	Waterfront Pekan Lingga	Pejabat Daerah Lingga
Sarawak Regatta	31 - 2 November 2025	Kuching	Kuching Waterfront	Kuching Resident Office
Limbang Open International Tug of War 2025	20 - 23 November 2025	Limbang	Kompleks Sukan Limbang	Persatuan Tarik Tali Bahagian Limbang
Samarahan Food and Cultural Festival	20 - 29 November 2025	Samarahan	Perkarangan Tempat Letak Kereta Aiman Mall	Majlis Perbandaran Kota Samarahan
13th Sibu International Bike Week 2025	5 - 7 Disember 2025	Sibu	Sibu Town Square Phase 2	Kelab Razz Chopper Motor Kpg Dato
Countdown 2026	31 Disember 2025	Kuching	Kuching Waterfront	Kementerian Pelancongan, Industri Kreatif dan Seni Persembahan Sarawak

# BUSINESS EVENTS HIGHLIGHT

## CALENDAR OF BUSINESS EVENTS 2025

	EVENT NAME	MONTH COMMENCE
1	National Symposium on Islamic Banking and Finance 2025 in Conjunction with the Opening of the Legal Year Sabah & Sarawak 2025 (OLYSS2025)	JANUARY
2	Borneo Innovation & Technology Convention 2025 (BIT2025)	FEBRUARY
3	ASEAN Lions Leaders Summit 2025	
4	EIC Connect Energy Borneo 2025	
5	Borneo International Consumer Expo 2025	
6	Sarawak ENT Update 2025	
7	Food & Hospitality Sarawak (FHS) 2025	APRIL
8	Creative Arts & Social Science International Conference (CASSIC 2025)	
9	Asia Pasific Hospice Palliative Care Conference 2025	
10	TechUnity Forum and Exhibition 2025	
11	New Era Run 2.0_STREAM Expo 2025	MAY
12	Borneo Eco Show 2025	
13	International Cancer Research Symposium 2025	
14	International Resilience Seminar 2025 (IReS25)	
15	Halal International Conference 2025 (HICON 2025)	
16	The National Farmer's Conference cum Annual General Meeting 2025	
17	2nd International Building Surveying Conference (IBSC): Trends, Technologies and Transformations 2025	JUNE
18	2025 Junior Chamber International Asia-Pacific Conference (2025 JCI ASPAC)	
19	11th Asia Pacific Conference on Exercise and Sports Science 2025	
20	College of Surgeons Annual Scientific Congress 2025	
21	IST Sarawak International Basic Orthopaedic Trauma: Advanced Symposium 2025	
22	Anaesthesia Patient Safety Symposium (APSS) combined with Regional Obesity and Bariatric Anaesthesia Conference (ROBAC) 2025 (Asia-Pacific Level)	JULY
23	3rd International Traditional Natural Medical Physician Conference 2025	
24	International Conference on Digital Applications, Transformation and Economy (ICDATE) 2025	
25	2nd Asia Pacific Conference on Zoonotic and Neglected Tropical Diseases 2025	
26	International Energy Week 2025	
27	Breakthrough Boundaries Conference 2025	

# BUSINESS EVENTS HIGHLIGHT

## CALENDAR OF BUSINESS EVENTS 2025

	EVENT NAME	MONTH COMMENCE
28	1st International Joint Conference and Exhibition on Gastro Tourism (IJCEGT 2025)	AUGUST
29	SHIFT Health & Wellness Conference	
30	49th Annual Conference of the Malaysian Society of Biochemistry and Molecular Biology (MSBMB) in conjunction with International Union of Biochemistry and Molecular Biology (IUBMB) Educational Seminar	
31	1st International Conference, Exhibition and Innovation on Public Health 2025	
32	2nd International Symposium on Recent Advances in Electronic and Computer Engineering 2025	SEPTEMBER
33	International Congress on Biofertilizers and Biopesticides for Sustainable Agriculture (ICBBS-2025)	
34	1st Malaysia Deaf Summit 2025	
35	3rd Borneo Diabetes Conference 2025	
36	Future of Business Summit 2025	
37	Forum with the Legend 2.0	OCTOBER
38	Active Aging-Mind, Body and Spirit	
39	International Conference on Traditional Dance, Music, Yoga, Visual and Performing Arts 2025	
40	The First Hardware Exhibition Kuching & Forum 2025	
41	23rd World Veterinary Poultry Association Congress 2025	
42	International Choir Competition, Forum and Workshop 2025	
43	11th International Conference on Low Carbon Asia 2025	
44	International Healthcare and Art In Clowning Convention 2025	
45	Global Sustainable and Artificial Intelligence Assembly: Ecotourism and Artificial Intelligence 2025	NOVEMBER
46	2nd International Convention on Sports, Sciences and Management 2025	
47	10th Edition LA.A Sarawak 2025 (Livestock, Aquaculture and Agriculture)	
48	1st Sarawak International Basic Orthopaedic Trauma: Advanced Symposium 2025	
49	International Evangelism Congress 2025	
50	Sakyadhita International Conference on Buddhist Women 2025	N/A

# IMPORTANT CONTACTS

## SARAWAK MUSEUM DEPARTMENT

- 📍 Sarawak Museum Department (Annex Building)  
Jalan P.Ramlee, 93400 Kuching
- ☎ 082-548181
- 📠 082-548281 / 548282
- ✉ museum@sarawak.gov.my
- 🌐 <https://museum.sarawak.gov.my>

## SARAWAK TOURISM BOARD

- 📍 Level 4, Plaza Aurora, Jalan McDougall,  
93000 Kuching, Sarawak
- ☎ 082-423600
- 📠 082-416700
- ✉ stb@sarawaktourism.com
- 🌐 <https://sarawaktourism.com>

## SARAWAK ARTS COUNCIL

- 📍 Rumah Sarawak, Jalan Taman Budaya  
93000 Kuching, Sarawak
- ☎ 082-415596 / 237652
- 📠 082-252098

## SARAWAK CRAFT COUNCIL

- 📍 Sarawak Steamship Building Kuching Waterfront  
93000 Kuching, Sarawak
- ☎ 082-245652 / 426042
- 📠 082-420253
- ✉ info@sarawakhandicraft.com.my
- 🌐 <https://sarawakhandicraft.com.my>

## BUSINESS EVENTS SARAWAK (C/O SARAWAK CONVENTION BUREAU)

- 📍 Level 3, Plaza Aurora Lot 20, Section 30,  
Jalan McDougall, 93000 Kuching, Sarawak
- ☎ 082-242516
- 📠 082-242519
- ✉ info@sarawakcb.com
- 🌐 <https://businesseventssarawak.com>

# VISITOR INFORMATION CENTRES (VIC)

## KUCHING

- 📍 Sarawak Tourism Complex  
(Old Court House), 93100 Kuching,  
Sarawak, Malaysia
- ☎ +6082410944
- 📠 +6082256301
- ✉ vic-kuching@sarawaktourism.com

## SIBU

- 📍 Sublot 3A & 3B,  
C/O Sibu Heritage Centre,  
Jalan Central 96000 Sibu,  
Sarawak, Malaysia
- ☎ +6084340980
- 📠 +6084341280
- ✉ vic-sibu@sarawaktourism.com

## MIRI

- 📍 Lot 1648, Jalan Raja, MCLD  
98000 Miri, Sarawak, Malaysia
- ☎ +6085434180 / 181
- 📠 +6085434179
- ✉ vic-miri@sarawaktourism.com











Published By:

**MINISTRY OF TOURISM, CREATIVE INDUSTRY AND PERFORMING ARTS SARAWAK**  
16th Floor (Right Wing), Bangunan Baitulmakmur II Medan Raya, Petra Jaya, 93050 Kuching SARAWAK